



The mission of Bridge Communities is to transition families experiencing homelessness to self-sufficiency by working with partners to provide mentoring, housing, and supportive services.

Together with over **400 volunteers**, we help empower more than 100 families we serve each year. Won't you help us bring hope to families experiencing homelessness in DuPage County?

## Volunteer Opportunities

Make an impact by volunteering your time and/or expertise with Bridge Communities. Contact Mary Slade at [mary.slade@bridgecommunities.org](mailto:mary.slade@bridgecommunities.org) to learn more about these opportunities.

**Mentoring:** Provide encouragement and guidance to our client families so that they can achieve self-sufficiency.

**Tutoring:** Use your teaching or tutoring experience to help a student achieve academic success with weekly one-on-one sessions.

### Employment Program volunteering:

HR professionals assist job-seeking clients by reviewing client resumes, participating in mock interviews, and providing feedback.

### Nutrition Program help:

Assist clients with food security, recipes, and gardening.

### Young Professionals Board:

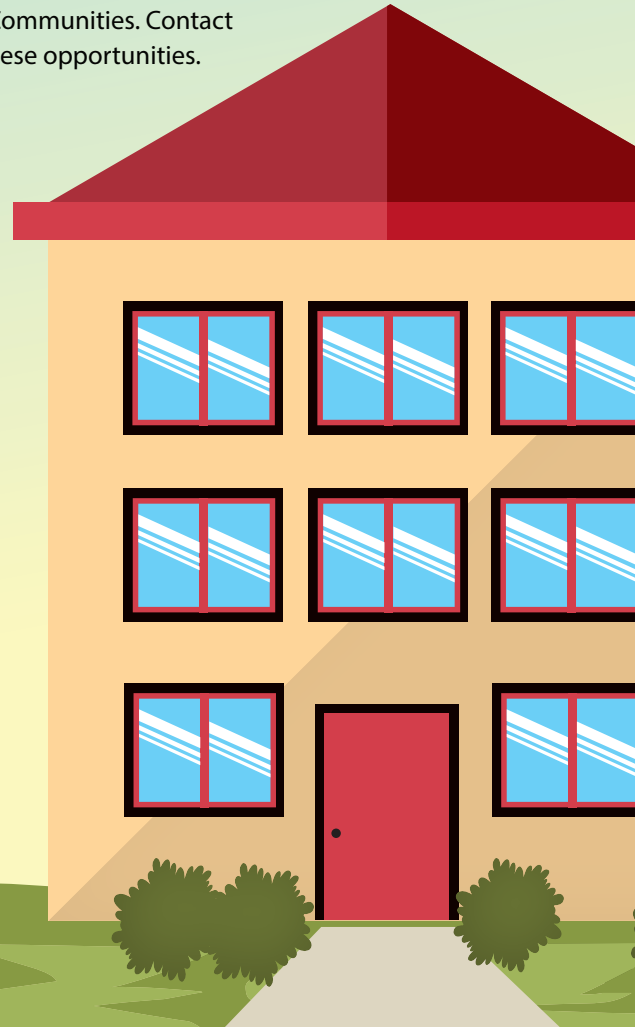
Provide strategic input, raise funds, build your network, and have fun.

### Bridge Communities Boutique:

Volunteers assist clients in selecting professional interview and employment-ready attire and help manage the boutique.

### In-kind professional services:

Support our families by providing services; we're in need of attorneys, mechanics, doctors, hair stylists and barbers, test prep professionals, dentists, orthodontists, optometrists, and more.



## Special Donations

Gift our families with the resources they need to be successful. Contact Mary Slade at [mary.slade@bridgecommunities.org](mailto:mary.slade@bridgecommunities.org) to learn more about the below opportunities.

**Help stretch our clients' budgets** by donating gift cards, gasoline cards, school supplies, and hygiene and household products. For easy ordering, go to Bridge's Amazon charity page.

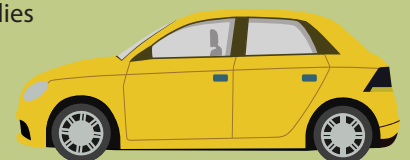


**Women's professional clothing:** Help women in the workforce look and feel the part by donating professional clothing.



**Specialty drives:** Let us help you get creative with special drives, e.g. welcome kits for families new to the program, toy drive for Bridge's holiday party, care baskets for families going through Intake, and more.

**Automobiles:** Gift Bridge's working parents with reliable transportation by making a tax-deductible donation of your car.



## Special Events

Volunteer as a day-of helper, committee member, connect us to business sponsors, or buy a ticket and join us at one of our many fundraising events. Contact Margo Matthew at [margo.matthew@bridgecommunities.org](mailto:margo.matthew@bridgecommunities.org) or visit [bridgecommunities.org/news-events](https://www.bridgecommunities.org/news-events) for more information.

**Wine Women & Shoes**

**Celebrating Women, Transforming Lives**

**Glen Ellyn Backyard BBQ**

**Pickleball Tournament**

**Sleep Out Saturday**

## Impactful Giving

Invest in Bridge families' futures and help support their goals through meaningful and fulfilling giving. Contact Kristin Short at [kristin.short@bridgecommunities.org](mailto:kristin.short@bridgecommunities.org) to learn more about the below opportunities.

**Circle of Hope Recurring Giving:** Ensure a consistent, reliable source of support to families through your monthly or quarterly gift.

**Scholarships:** Help a child attend summer camp, enrichment programs, or even higher education with scholarships.

**The Bridge Communities Founders Fund:** Connect teens to college prep workshops, career assessment, ACT and SAT tutoring, scholarships, personal assistance with college applications and financial aid forms, and more.

**The Cornerstone Society:** Let Bridge help you achieve your financial goals and leave a legacy of generosity.

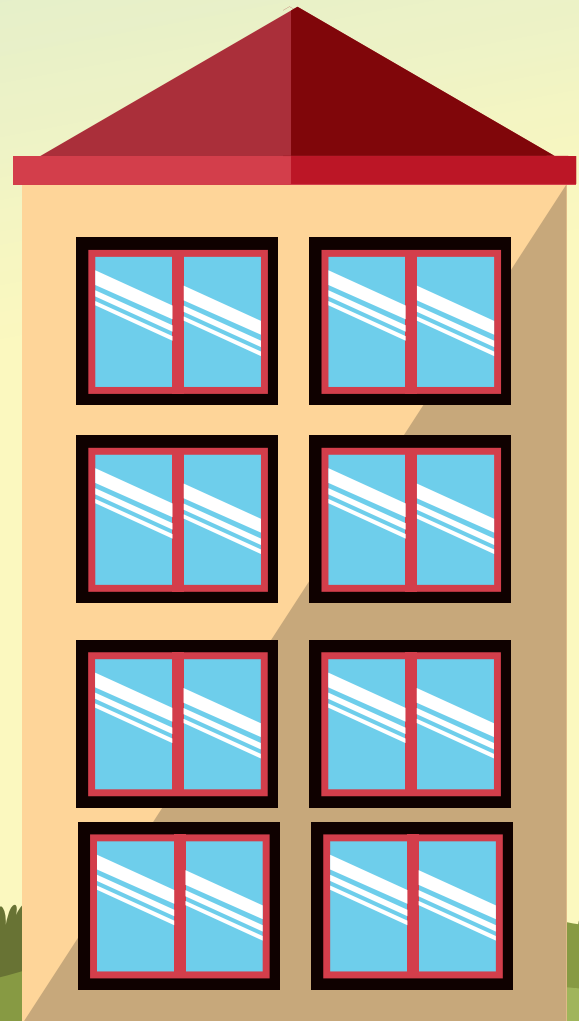
Host a social media fundraiser or choose Bridge as a third-party recipient for your fundraising event or Giving Party.

Please note that due to storage and distribution restrictions, we cannot accept the following donations: food, furniture, children's clothing, men's clothing, or used toys. Please visit [www.givingdupage.org](http://www.givingdupage.org) for locations that accept those items.



500 Roosevelt Rd  
Glen Ellyn, IL 60137  
630-545-0610

[www.bridgecommunities.org](http://www.bridgecommunities.org)



Follow us on Facebook, Instagram, and LinkedIn at Bridge Communities for updates!

